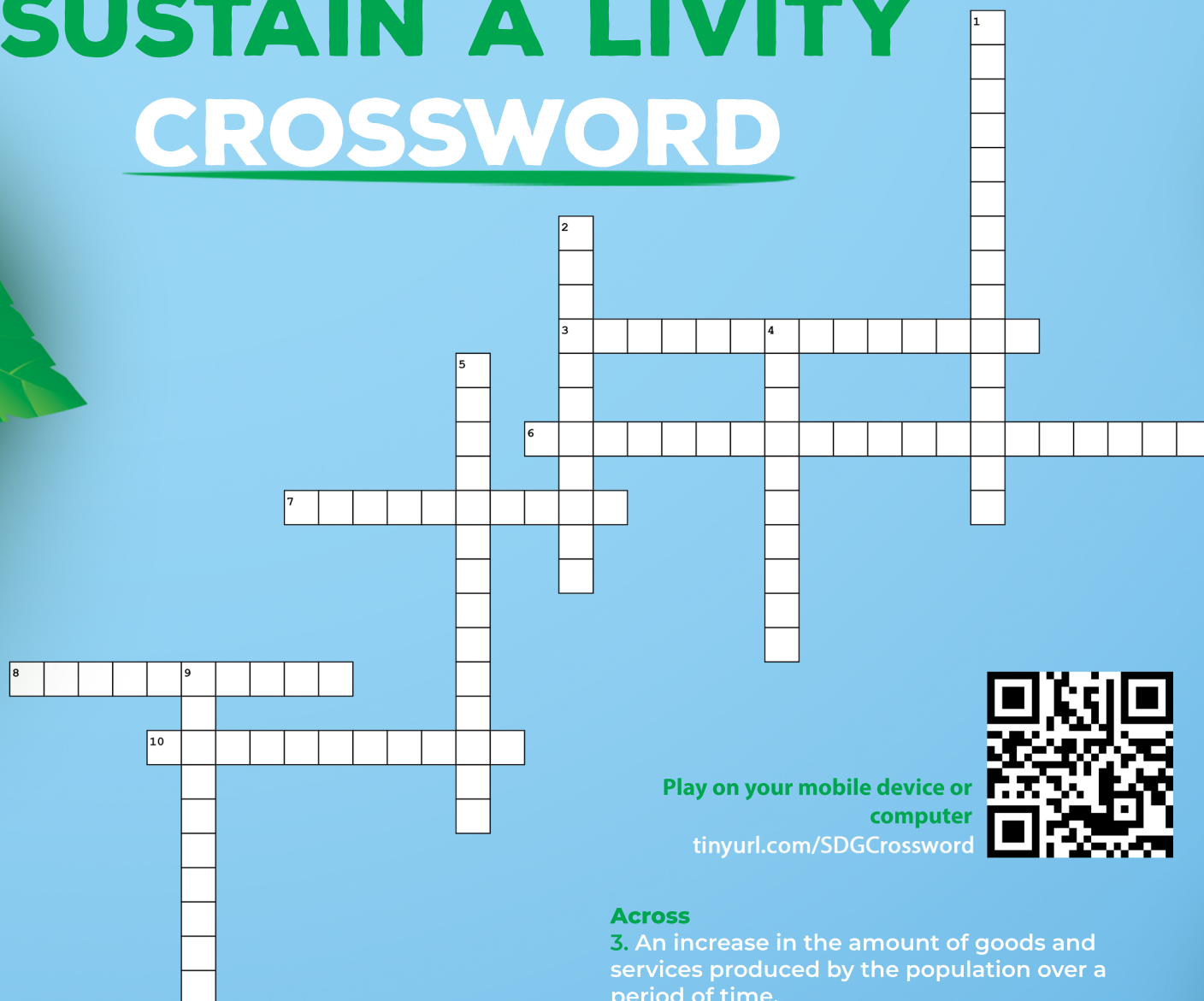


SUSTAIN A LIVITY CROSSWORD



Down

1. The total amount of greenhouse gases (including carbon dioxide and methane) that are generated by our actions.
2. The process of making an area of land or water more useful or profitable.
4. A payment or concession to stimulate greater output or investment.
5. Safeguarding resources to create long-term value by optimal use
9. The process of changing an existing product or service so that it is suitable for different customers.

Across

3. An increase in the amount of goods and services produced by the population over a period of time.
6. Designated geographical areas with special economic regulations that differ from general trade, tax and investment rules.
7. Special features or improvements added to a product or service to increase its monetary value and desirability to consumers.
8. The process that an individual or organization undertakes to conceptualize brand new products, processes, and ideas, or to approach existing products, processes, and ideas in new ways
10. An arrangement where parties agree to cooperate and advance their mutual interests.

Play on your mobile device or
computer

tinyurl.com/SDGCrossword

